

# the "Loft ver 2"



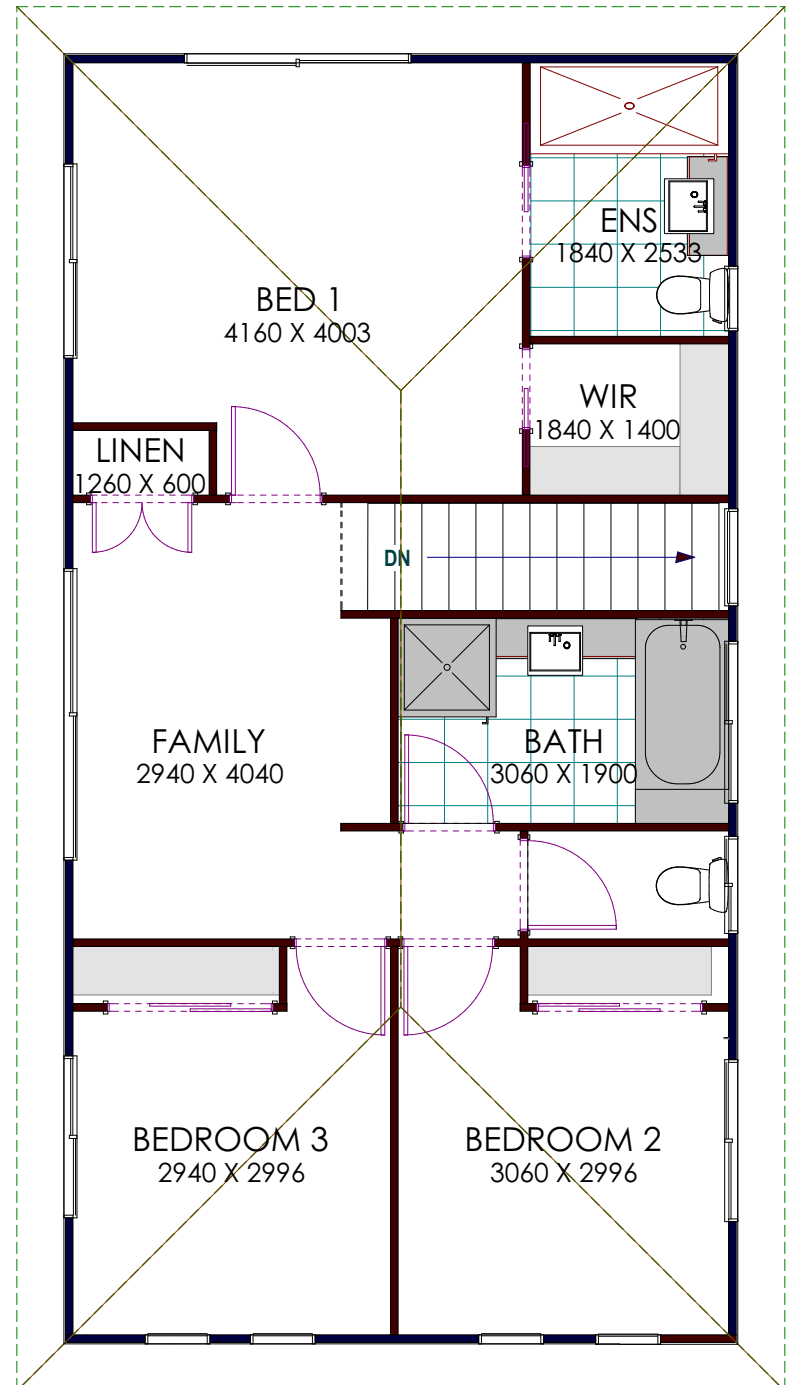
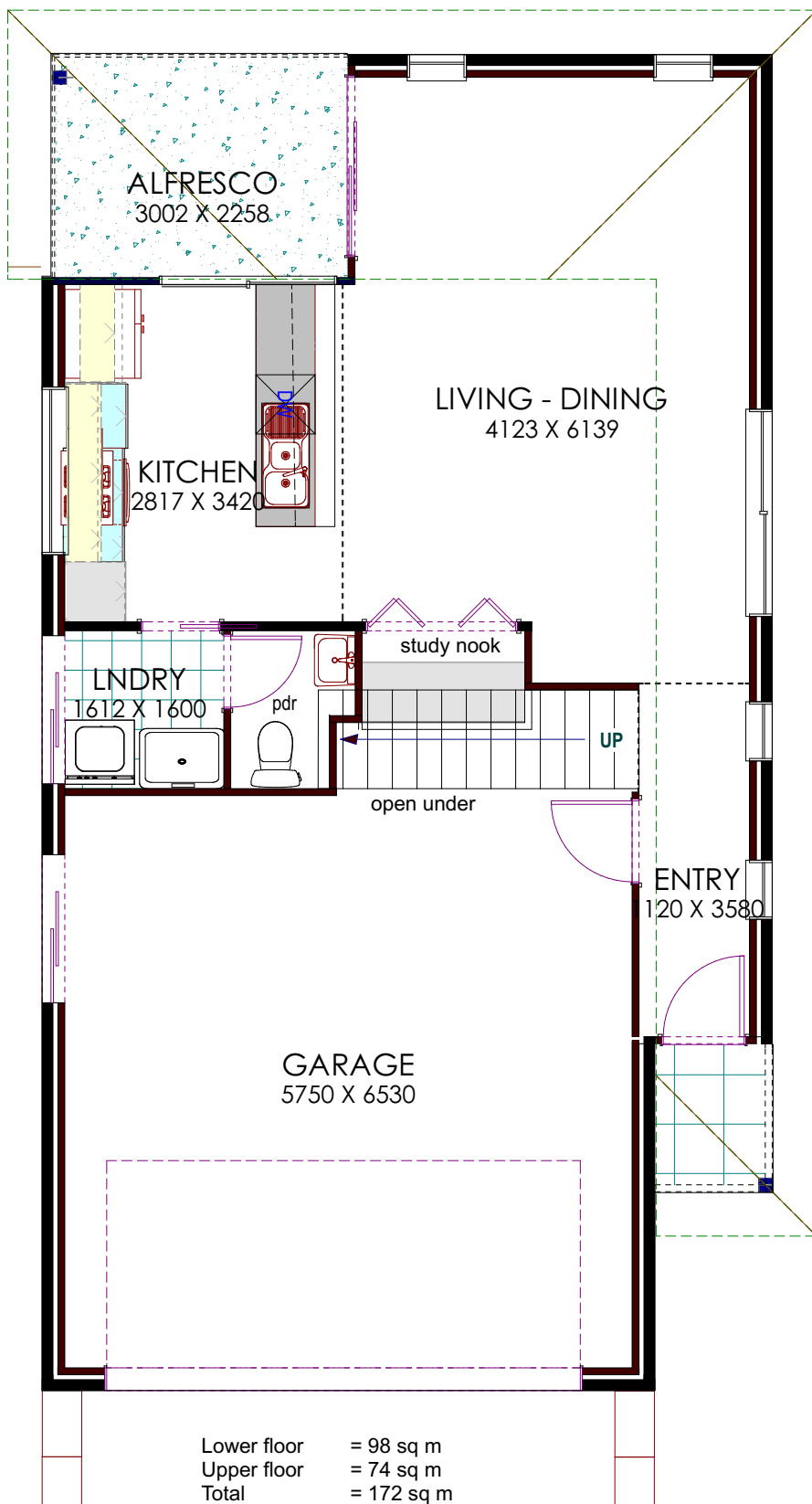
Hamptons facade



Contemporary facade



Traditional facade



Contact: PH 1300 ALLBUILD  
E: [info@alliedbuilder.com](mailto:info@alliedbuilder.com)

## BUILDING COMPANIES

These drawings remain the property of Steve Smith and Allied Building Companies Pty Ltd and are protected under copyright. Copy in part or in whole is forbidden without written permission from Steve Smith and Allied Building Companies Pty Ltd. These drawings and sketches are only an artistic impression and are subject to change at working drawings stage. Confirm non-standard inclusions.



**172**  
House size



**10**  
Block width



**25**  
Block depth



**8**  
House width



**15**  
House depth



**2**



**2**



**3**