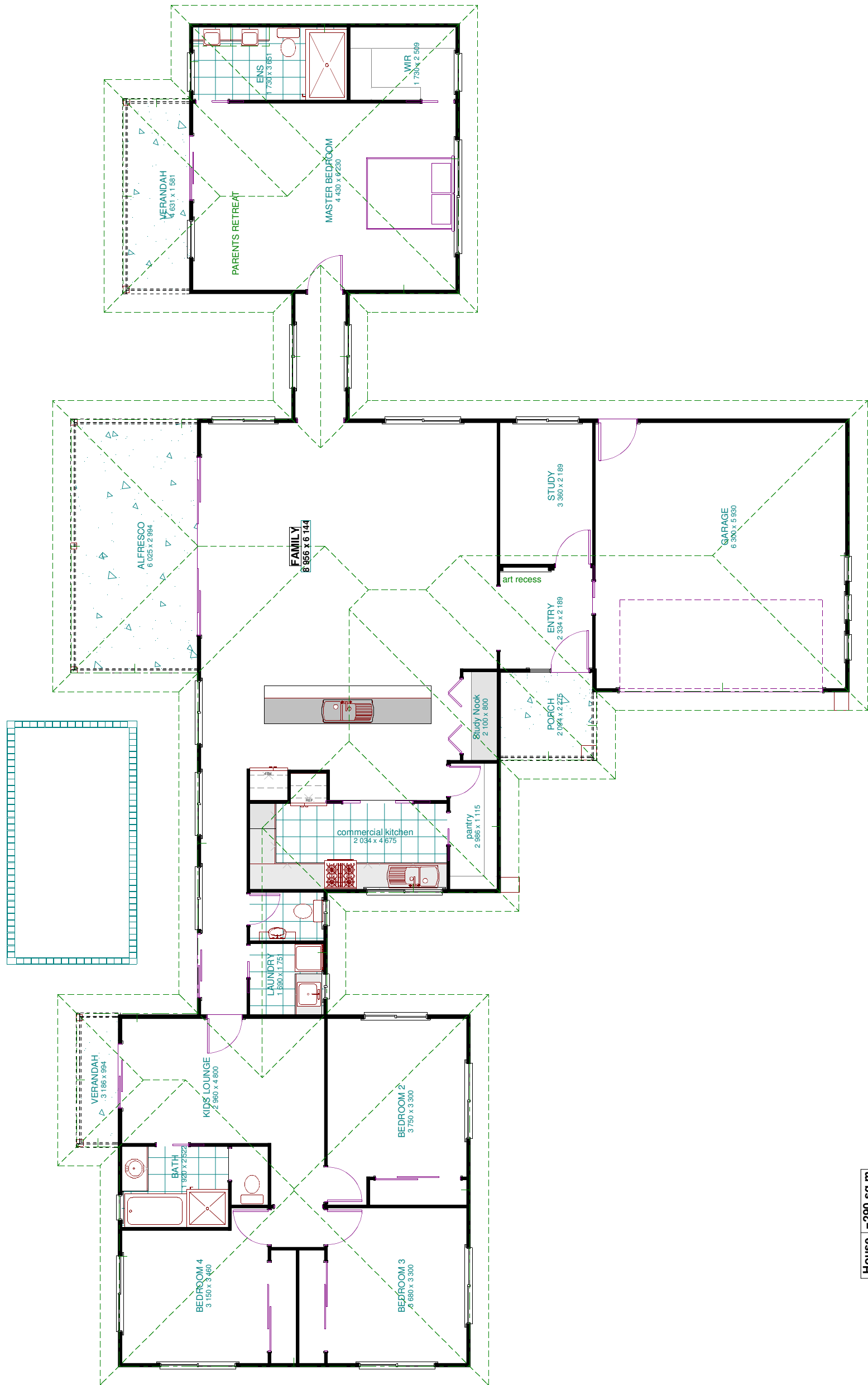


the "Bali-Hai"



LIVING AREA
228.3 sq m

House	=290 sq m
Length	=32500
Width	=18500



Contact: Steve Smith ph 0408 192 669
E: steve@alliedbuilder.com

These drawings remain the property of Steve Smith and Allied Building Companies Pty Ltd
Copy in part or in whole is forbidden without written permission from Steve Smith and Allied Building Companies Pty Ltd. These drawings and sketches are only an artistic impression and are subject to change at working drawings stage. Confirm non-standard inclusions.

36
Block width

30
Block depth

