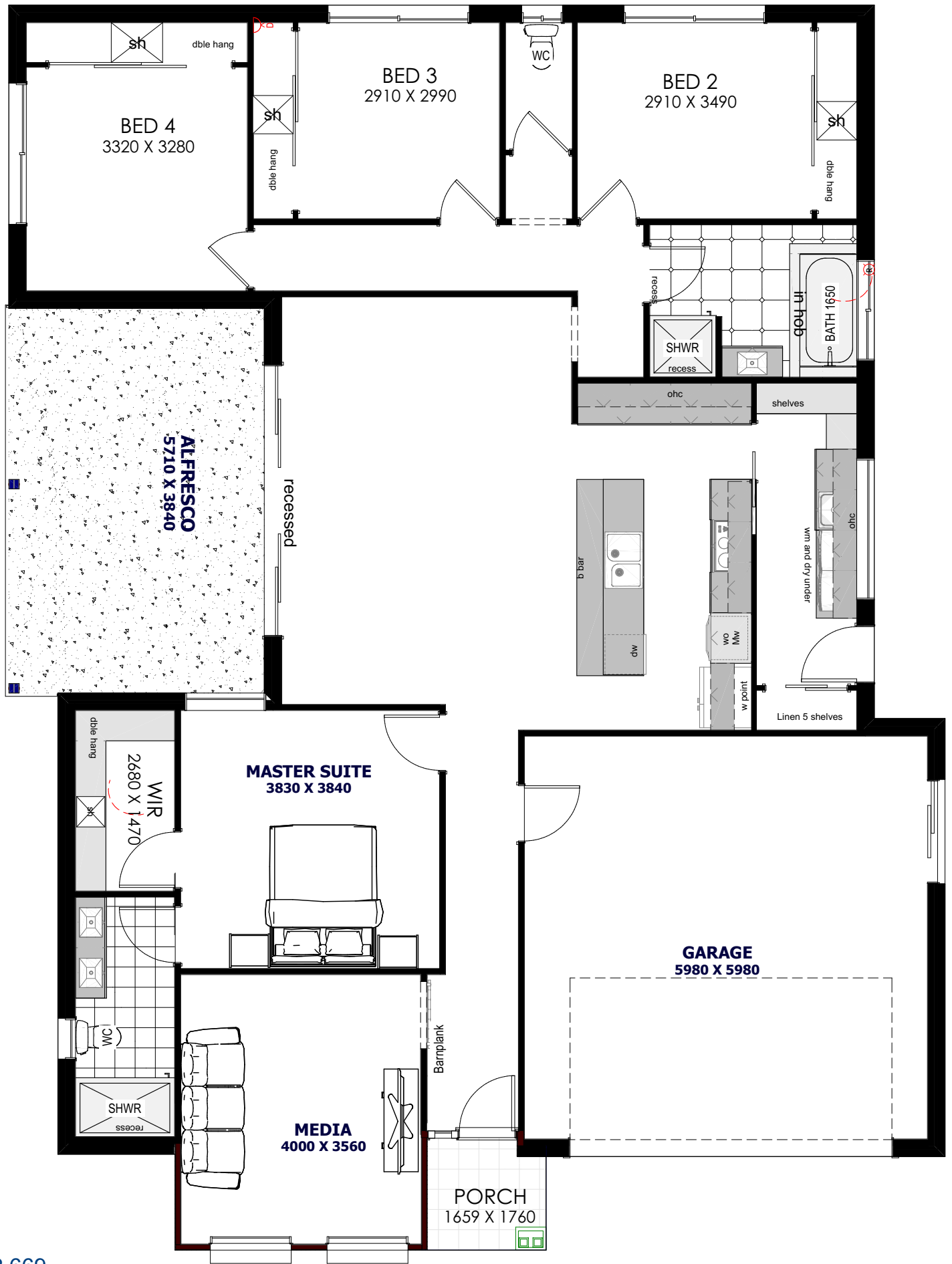


# the "Epping"



**For the lot that requires living/Alfresco to the side.**  
 Lounge at the front of the house as you enter.  
 -3 Kids bedrooms to the rear  
 -Butlers pantry/Laundry combined with heaps of bench space  
 -Large undercover alfresco  
 -Extra cupboards and bench space in the kitchen



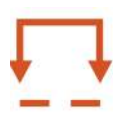
Contact: PH 0408 192 669  
 E: info@alliedbuilder.com

BUILDING COMPANIES

These drawings remain the property of Steve Smith and Allied Building Companies Pty Ltd and are protected under copyright. Copy in part or in whole is forbidden without written permission from Steve Smith and Allied Building Companies Pty Ltd. Floor plans and images are indicative only, conceptual in nature and subject to change. Floor plans and images may depict fixtures, fittings, inclusions, furnishings, pools and or other products that are not included in the house design or costings.



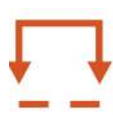
**230**  
House size



**18**  
Block width



**30**  
Block depth



**14**  
House width



**18.5**  
House depth



**2**



**2**



**4**