

the "Kingsbourne"

- Perfect for lots that need the living to the side
- Combined Butlers/Laundry gives heaps of bench space
- Separated lounge opens on to the alfresco



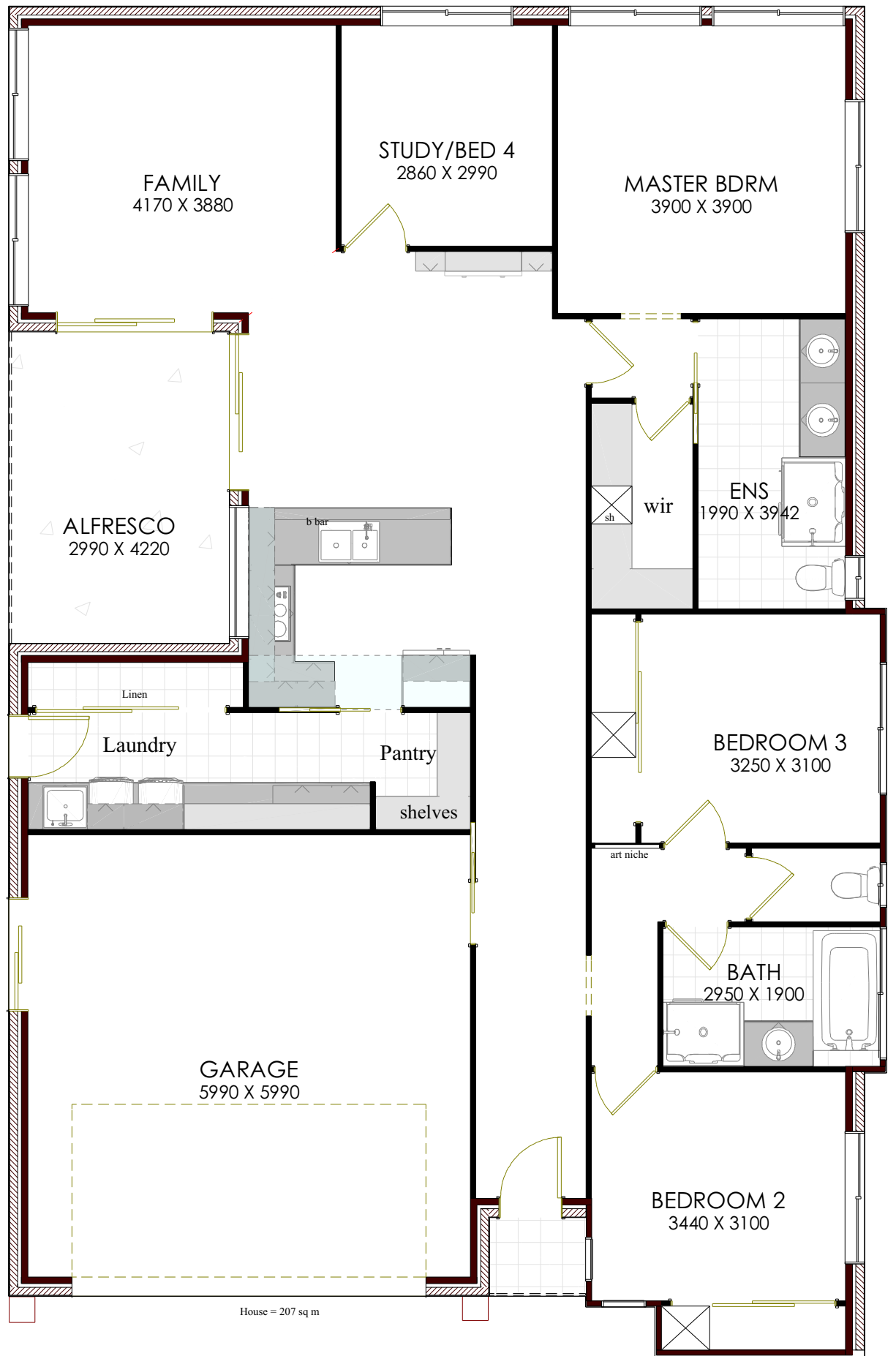
Traditional Facade



Scandi Facade



Contemporary Facade



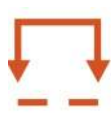
Contact: PH 0408 192 669
E: info@alliedbuilder.com

BUILDING COMPANIES

These drawings remain the property of Steve Smith and Allied Building Companies Pty Ltd and are protected under copyright. Copy in part or in whole is forbidden without written permission from Steve Smith and Allied Building Companies Pty Ltd. Floor plans and images are indicative only, conceptual in nature and subject to change. Floor plans and images may depict fixtures, fittings, inclusions, furnishings, pools and or other products that are not included in the house design or costings.



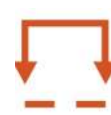
207
House size



16
Block width



30
Block depth



12
House width



18.3
House depth



2



2



4